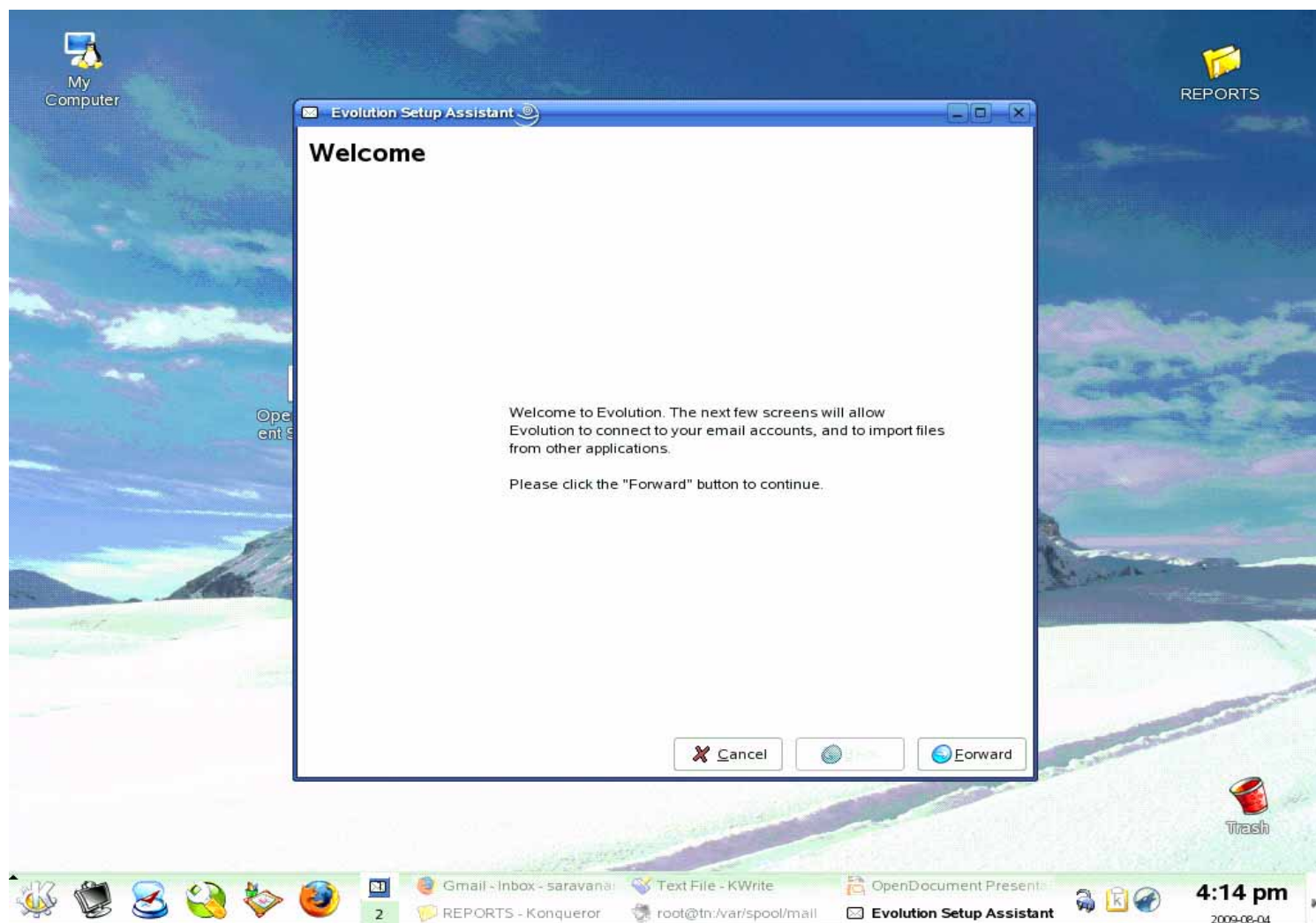
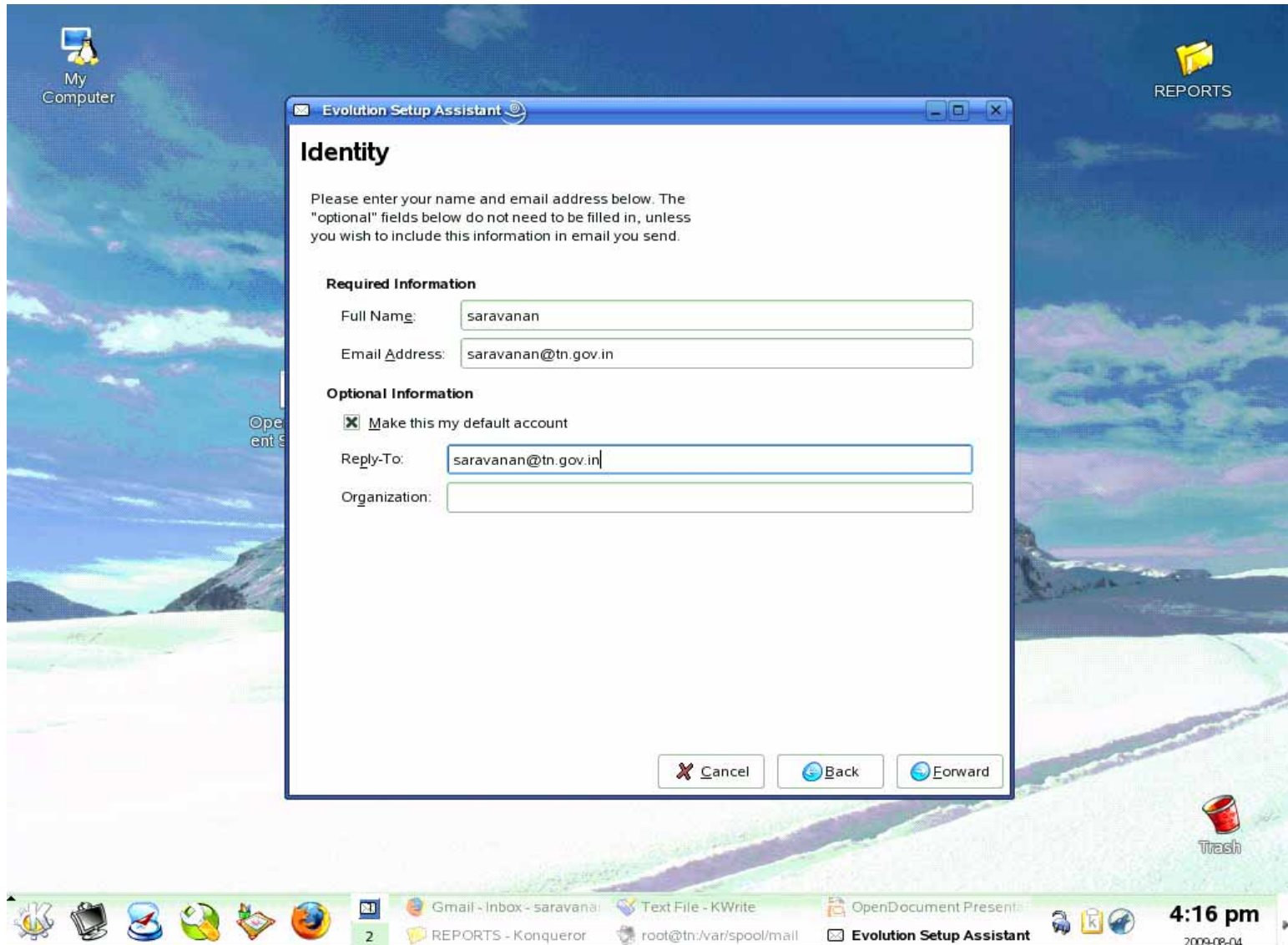


Click K Menu → select Internet → click E-mail → select Evolution Mail
Then it shows welcome screen then click forward

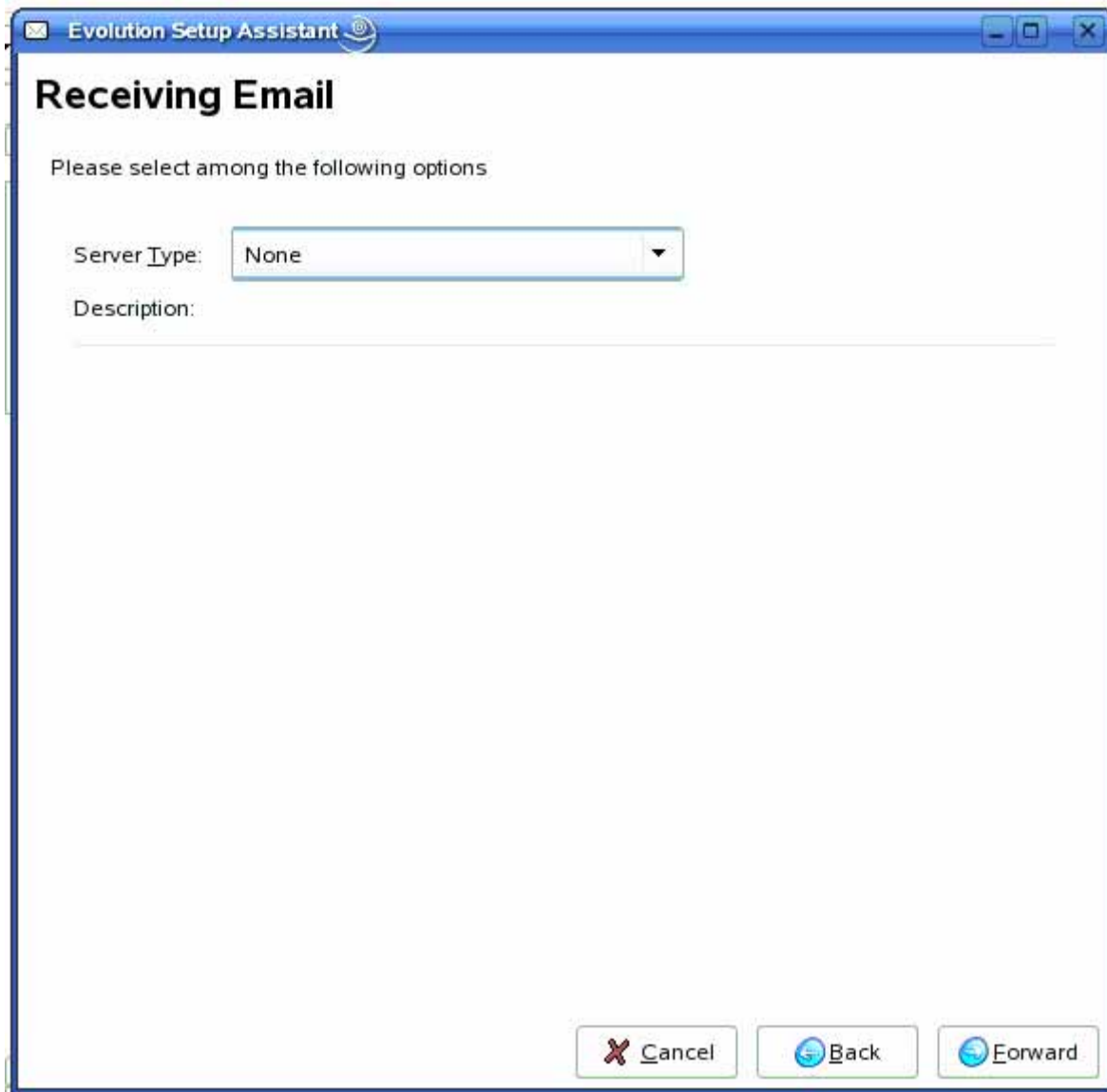


Then it shows Identity screen in that box we have enter your full *name* and *e-mail* address
Then type the same *e-mail address* in reply to box
Then click forward



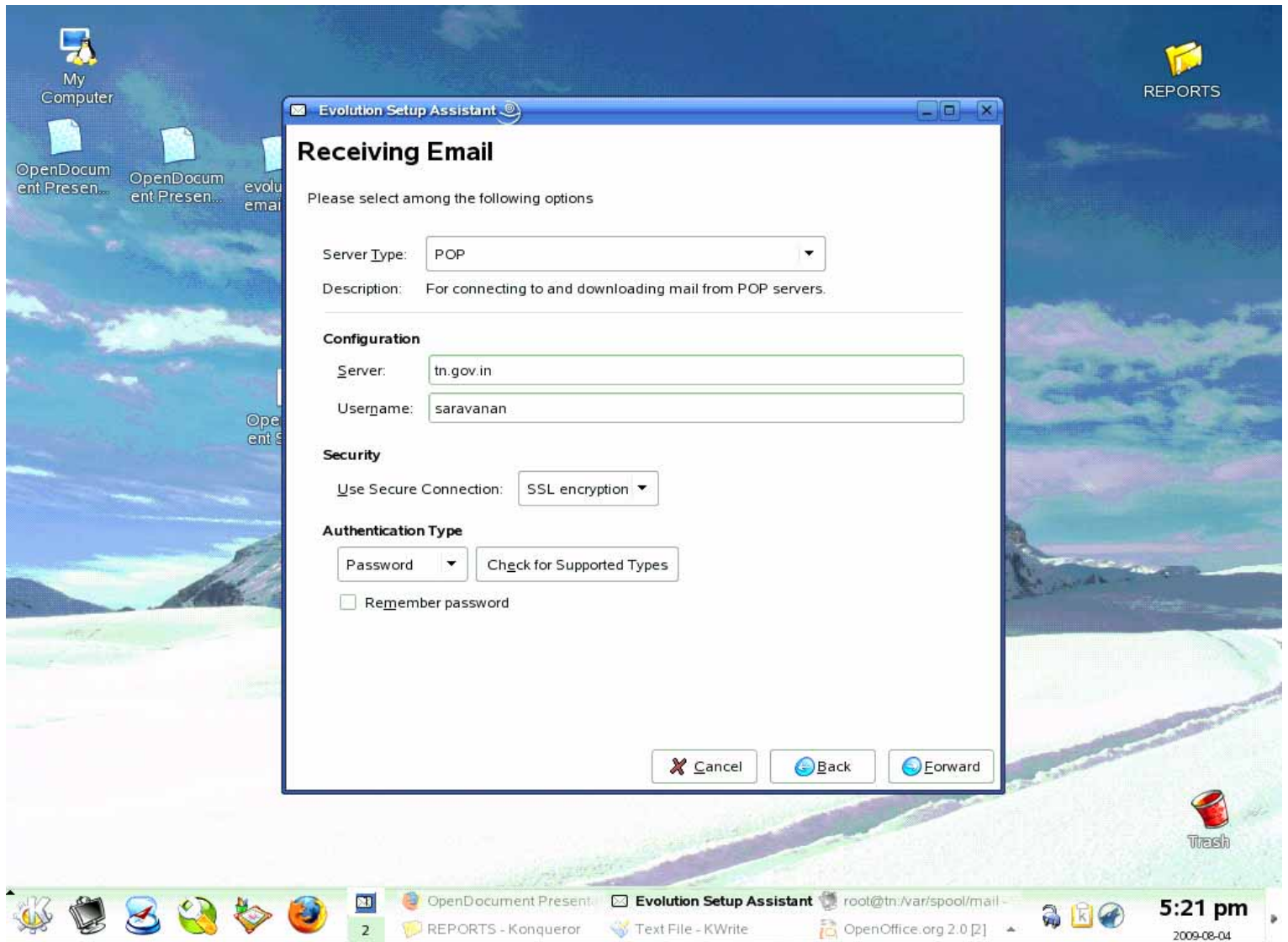
Then it will show *receiving e-mail* box in that box select the server type as *POP*

Then click forward

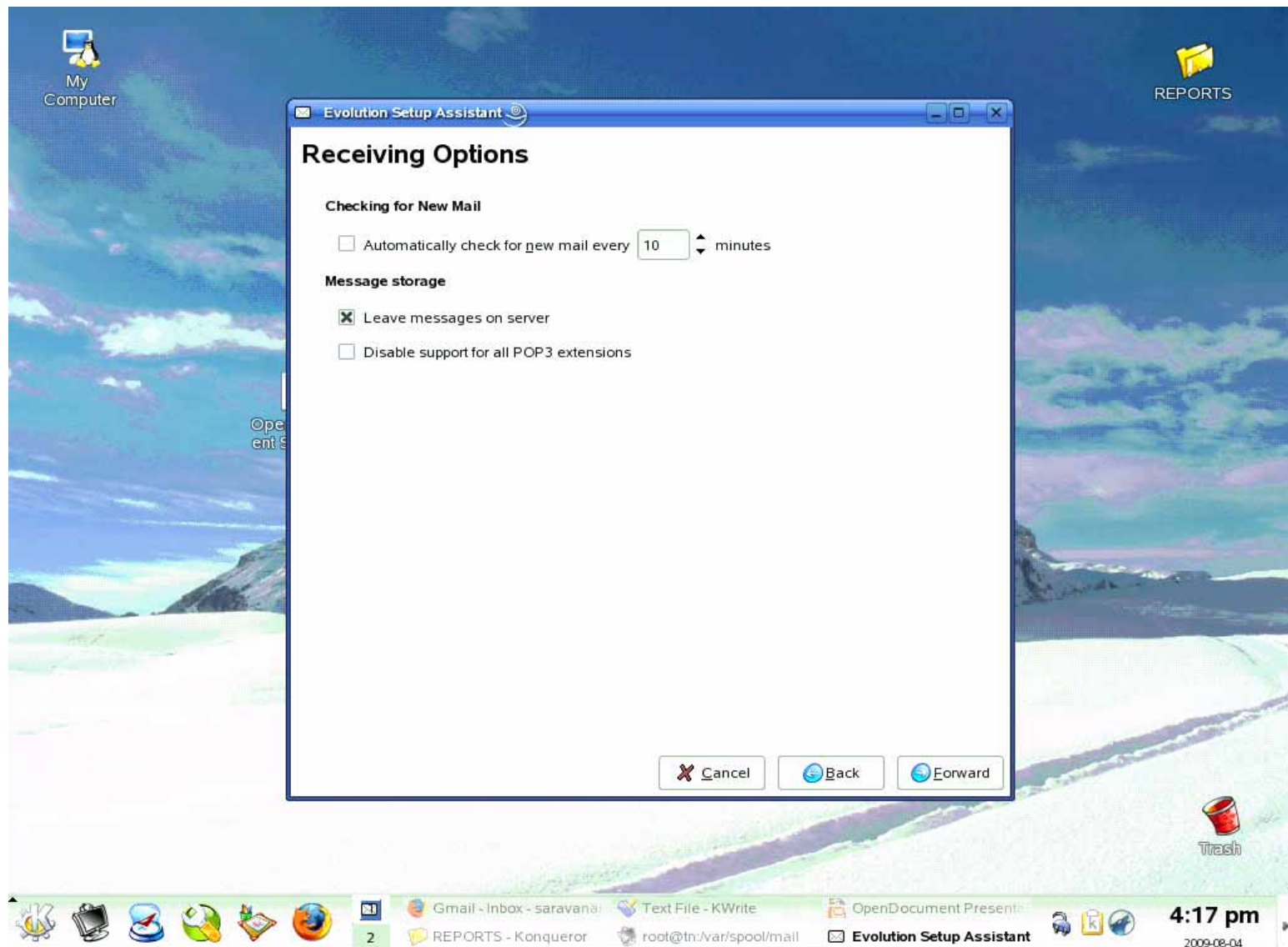


Then we have to enter the details

1. Type server as *tn.gov.in*
 2. Enter your *user name*
 3. Select security as *SSL encryption*
 4. Authentication method is *Password*
- Then click *forward*

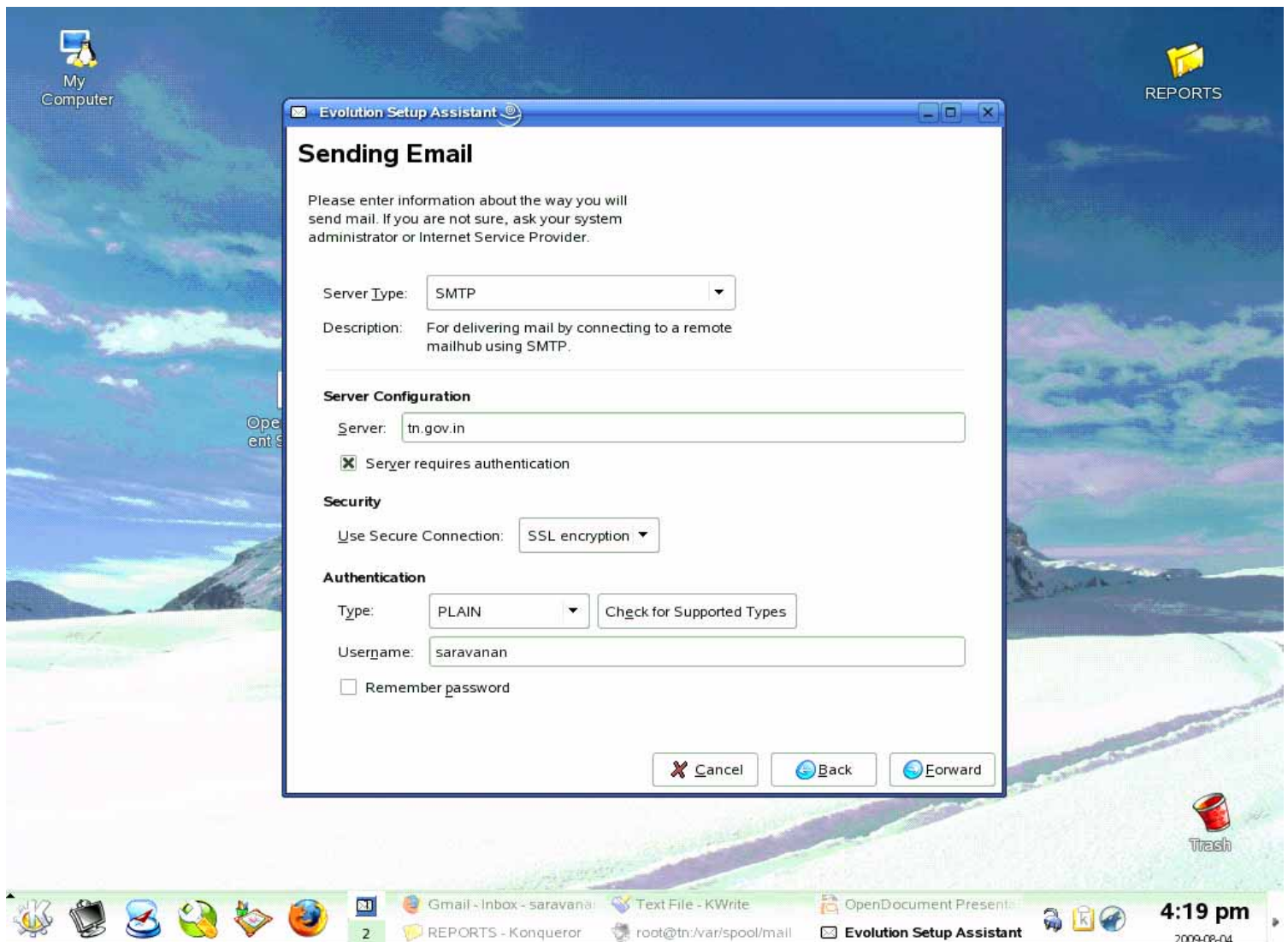


Then select *Leave messages on server*
Then click *forward*

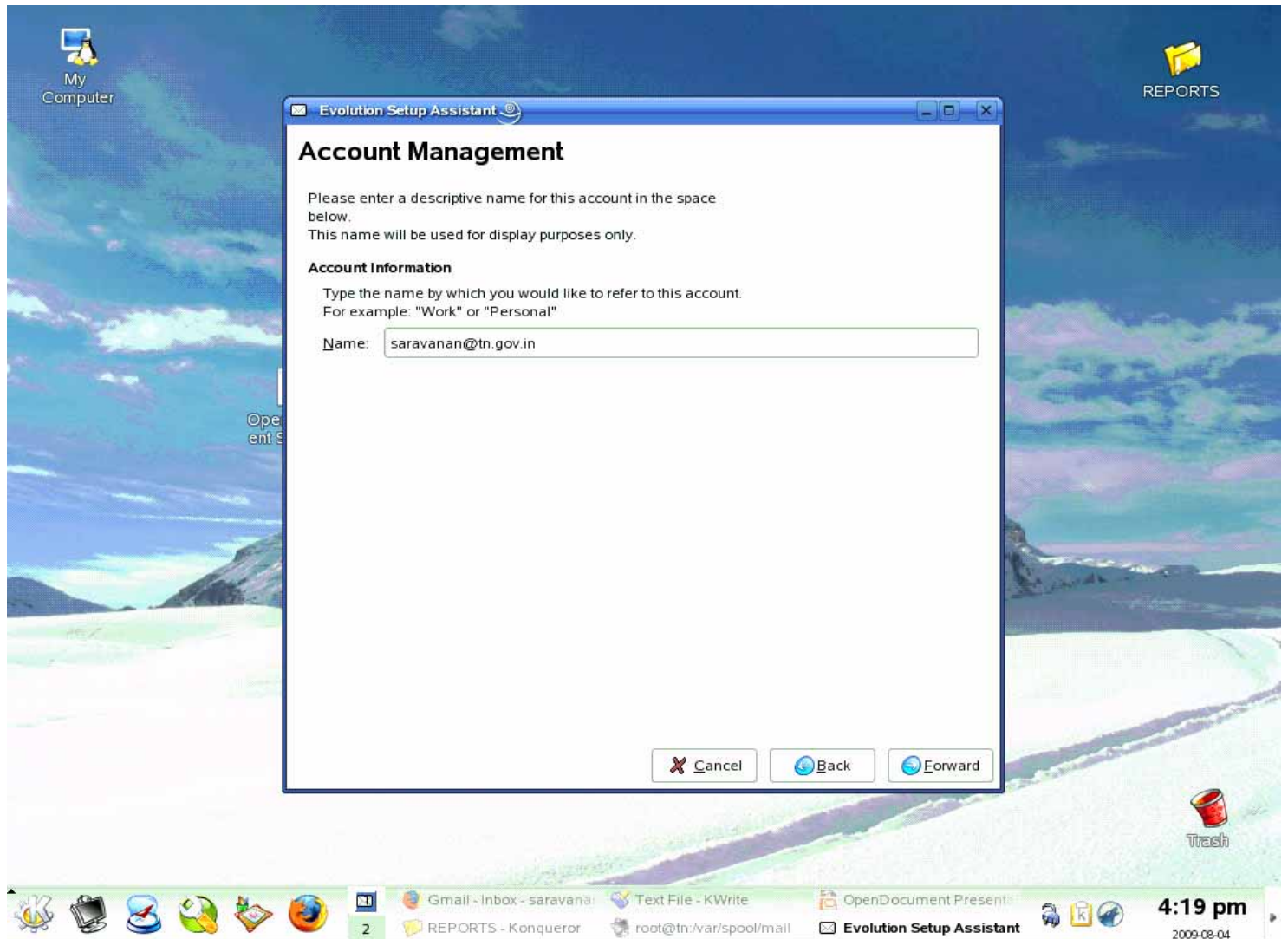


Then it shows sending email option in that box we have to select

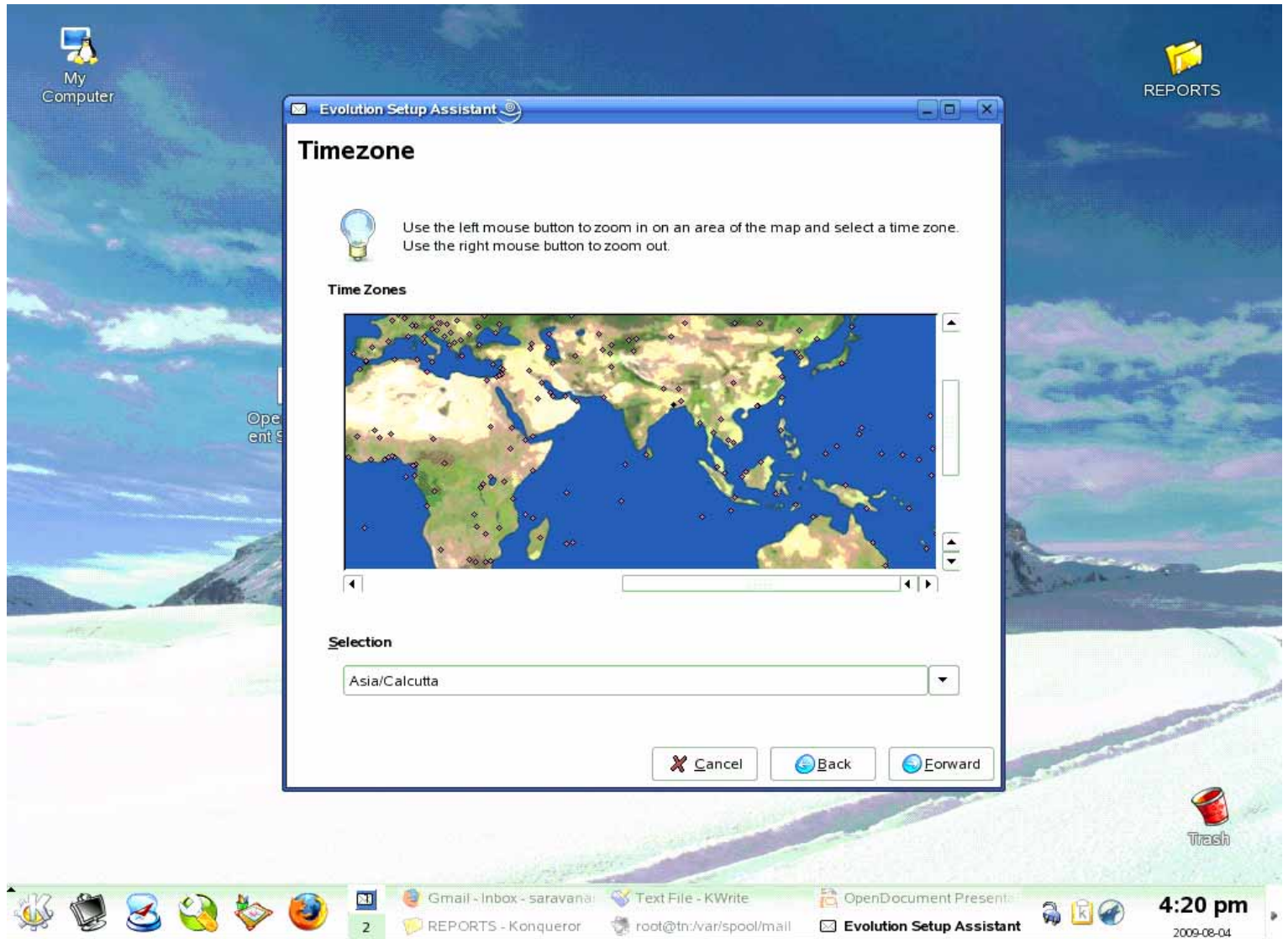
1. Select sever type as **SMTP**
2. Enter server name as **tn.gov.in**
3. Select **server requires authentication**
4. Select **SSL encryption** in use secure connection
5. Select Authentication type as **PLAIN**
6. Enter **user name** and click **forward**



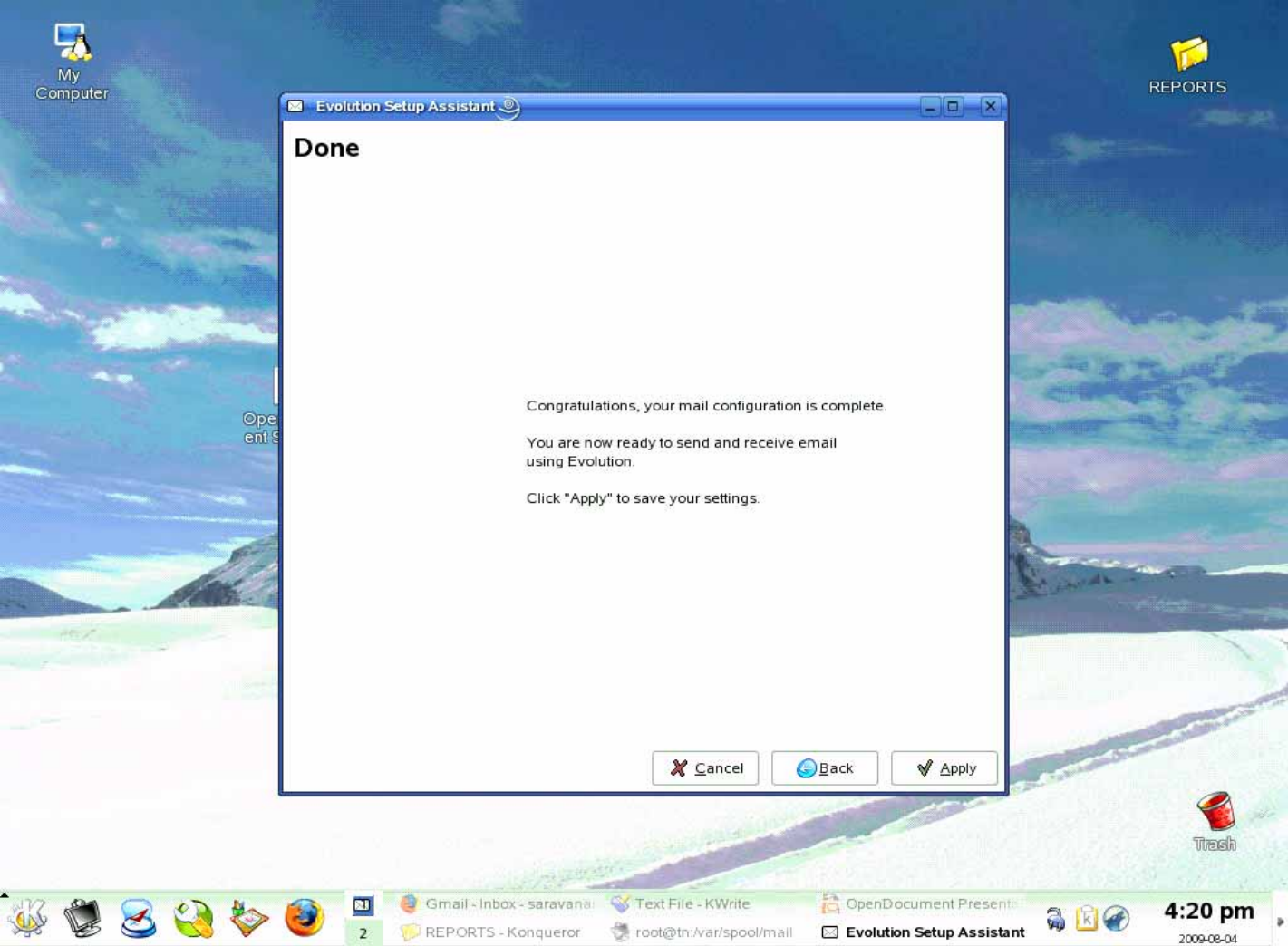
Enter name as your *email id*
Then click *forward*



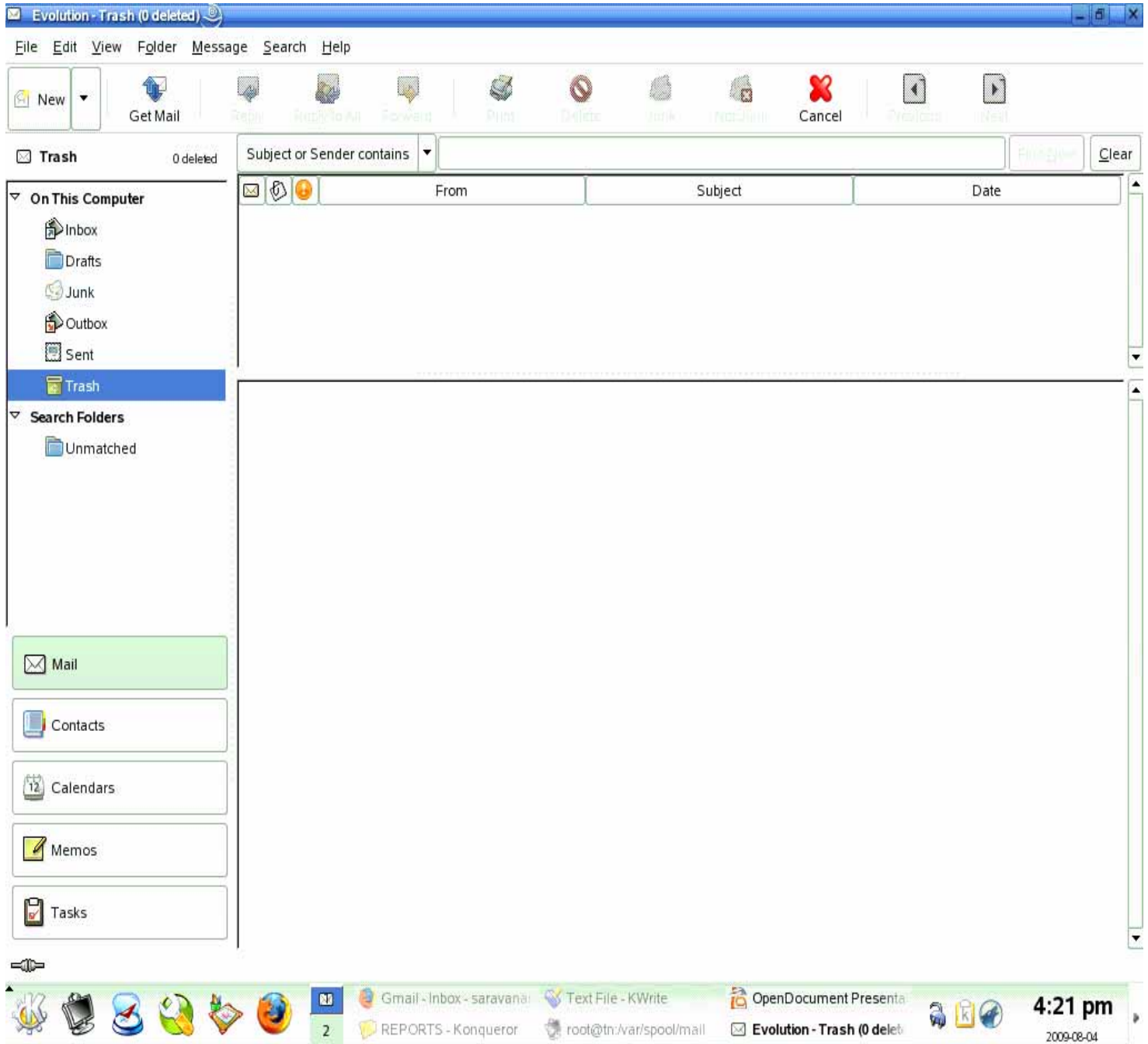
Select time zone as *Asia/Calcutta* then click *forward*



Then click *apply*



Then click *Get Mail* icon in the tools bar



Then it shows one evolution warning message in that message we have to click *Ok*

Then the mail will be downloaded.

